

DO NOT SCALE. WORK TO FIGURED DIMENSIONS ONLY.  
 ALL EXISTING DIMENSIONS TO BE CHECKED ON SITE.  
 DRAWN ON AUTOCAD R2004 AT DEADY GAHAN ARCHITECTS LTD  
 LAYERS ON THIS DRAWING COMPLY WITH BS 1192: PART 5



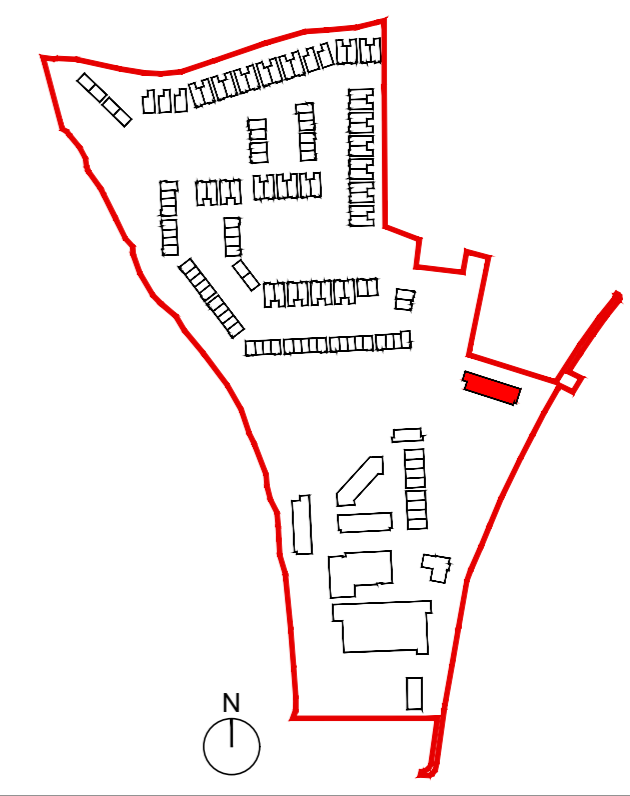
**FRONT ELEVATION**  
 scale 1:100 @ A1

- PRESSED METAL CAPPING TO PARAPET, COLOUR GREY
- UPVC DOUBLE GLAZED WINDOWS
- SELECTED BRICK OUTER LEAF, COLOUR LIGHT GREY
- SELECTED BRICK OUTER LEAF, COLOUR LIGHT BEIGE
- CONCRETE BLOCK CAVITY WALL WITH SMOOTH PLASTER FINISH, COLOUR OFF WHITE
- UPVC/HARDWOOD FRONT DOOR WITH GLAZED VISION PANEL, SMOOTH PLASTER PLINTH

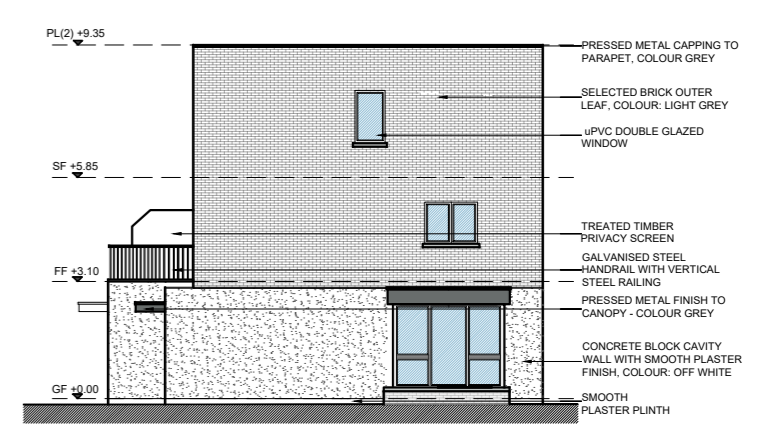


**REAR ELEVATION**  
 scale 1:100 @ A1

- PRESSED METAL CAPPING TO PARAPET, COLOUR GREY
- UPVC DOUBLE GLAZED WINDOWS
- SELECTED BRICK OUTER LEAF, COLOUR LIGHT GREY
- SELECTED BRICK OUTER LEAF, COLOUR LIGHT BEIGE
- CONCRETE BLOCK CAVITY WALL WITH SMOOTH PLASTER FINISH, COLOUR OFF WHITE
- UPVC DOUBLE GLAZED SLIDING DOORS
- SMOOTH PLASTER PLINTH



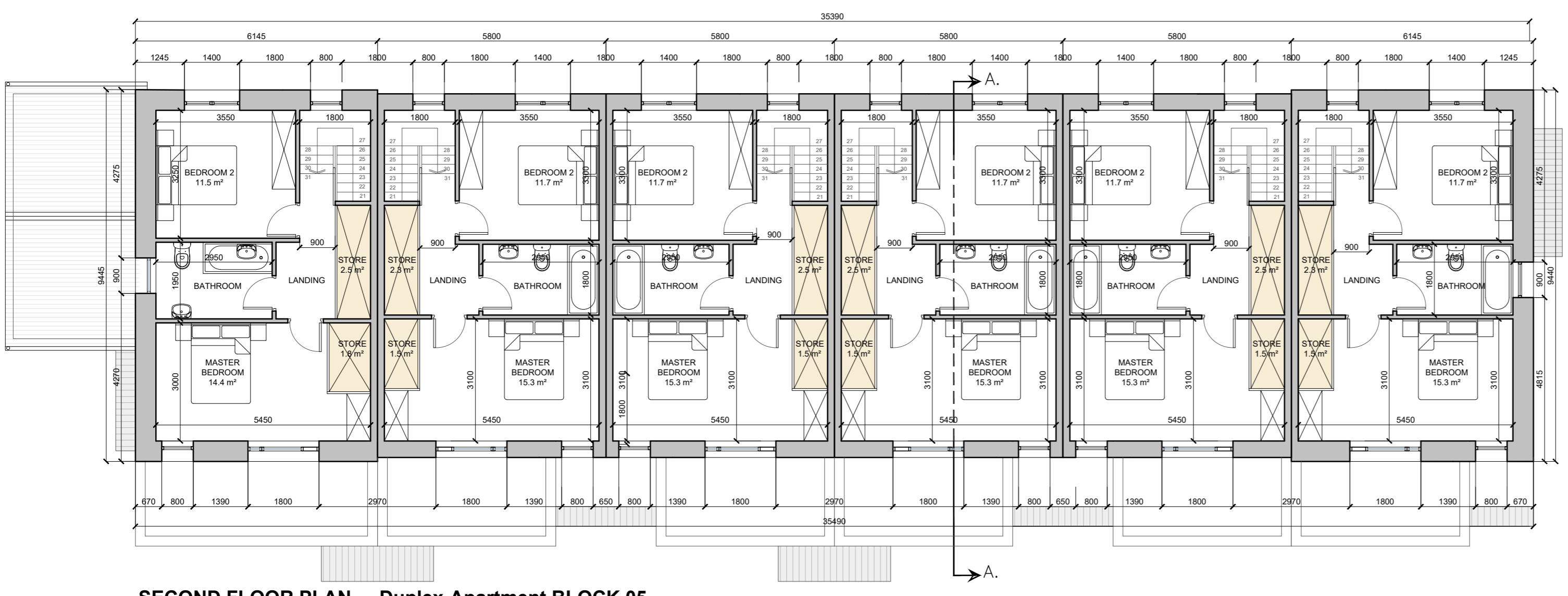
SEE SITE PLAN FOR ORIENTATION & FFL  
 DWG NO. 20068/P/003



**SIDE ELEVATION**  
 scale 1:200 @ A1

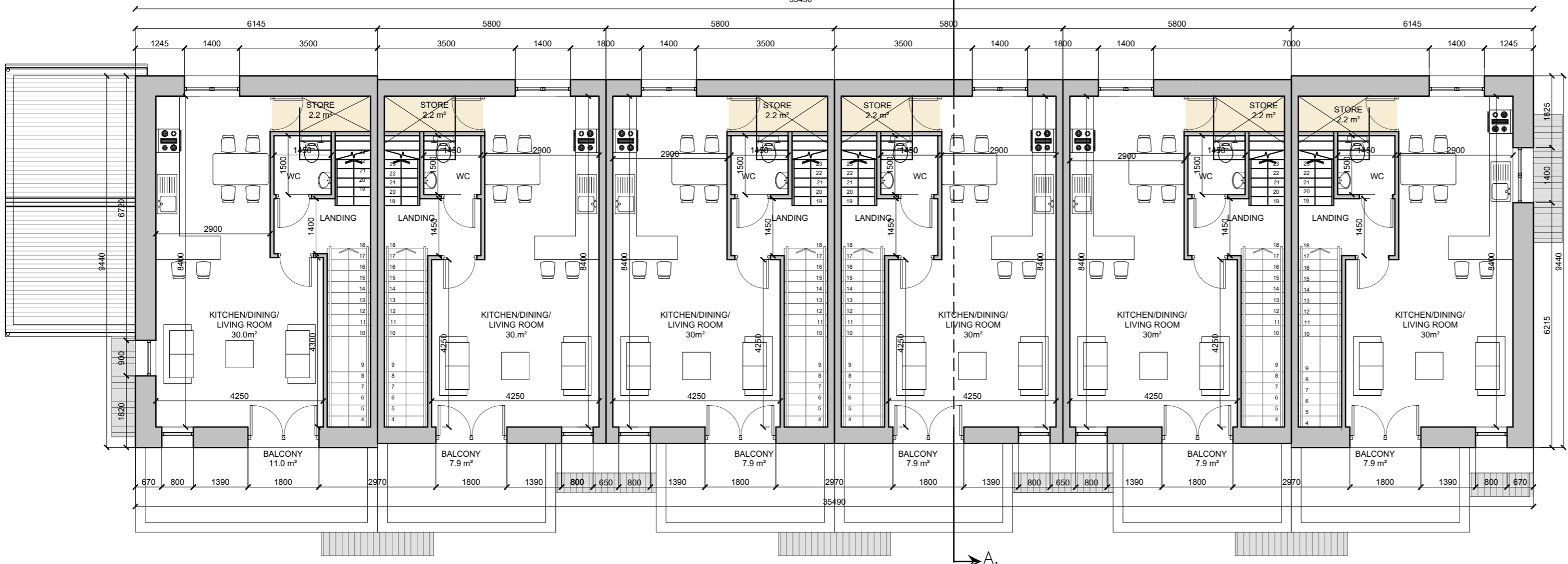


**SIDE ELEVATION**  
 scale 1:200 @ A1

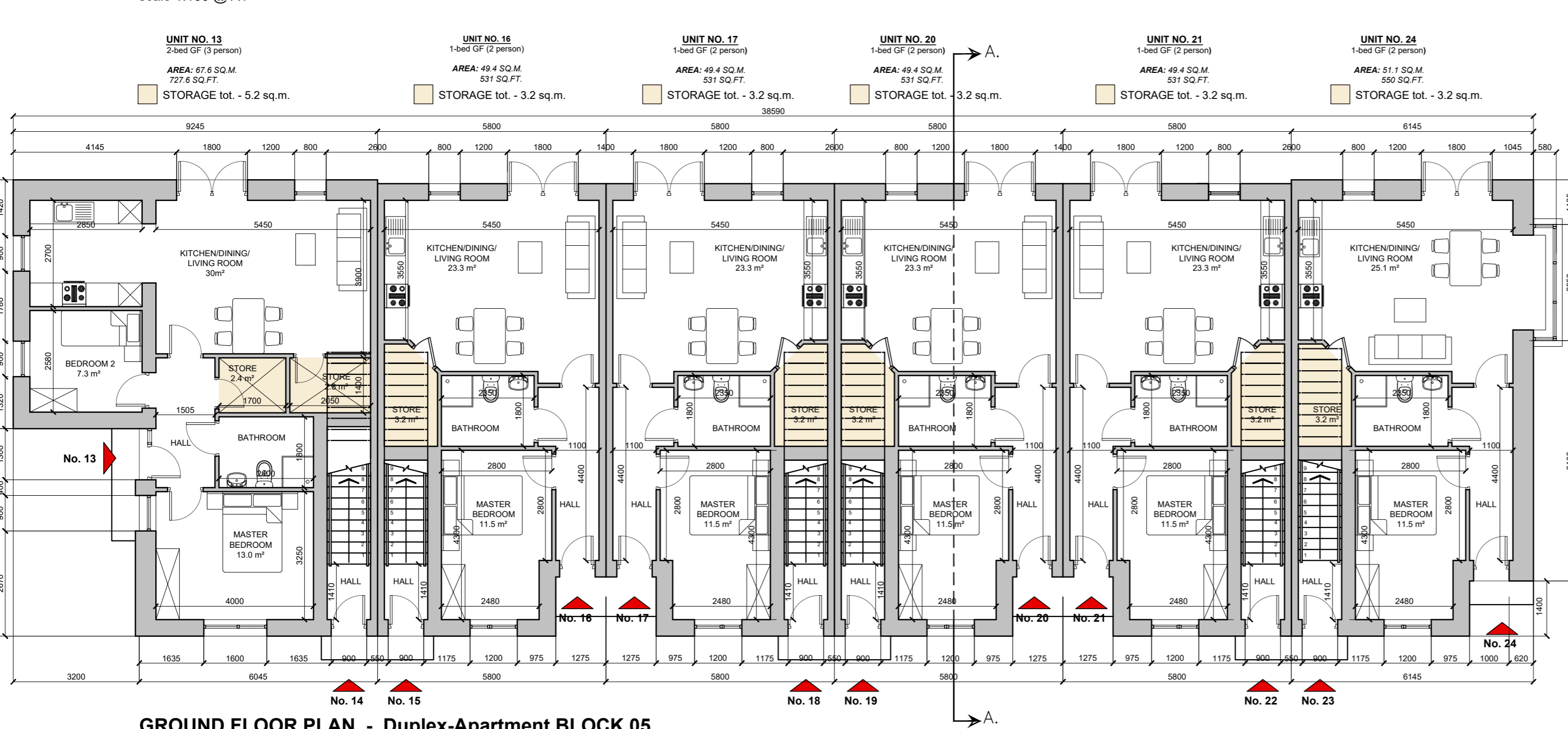


**SECOND FLOOR PLAN - Duplex-Apartment BLOCK 05**  
 scale 1:100 @ A1

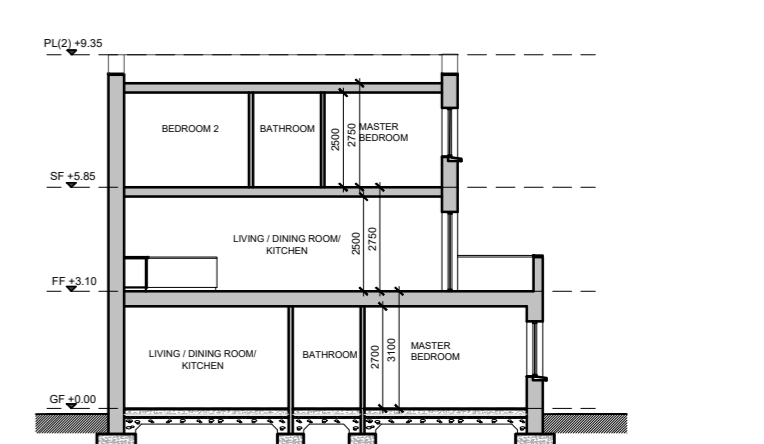
- UNIT NO. 14: 2-bed Duplex (4 person), AREA: 86.3 SQ.M, 929 SQ.FT. (with access staircase and ground floor entrance = 93.56 sq.m.)
- UNIT NO. 15: 2-bed Duplex (4 person), AREA: 86.3 SQ.M, 929 SQ.FT. (with access staircase and ground floor entrance = 93.56 sq.m.)
- UNIT NO. 16: 2-bed Duplex (4 person), AREA: 86.3 SQ.M, 929 SQ.FT. (with access staircase and ground floor entrance = 93.56 sq.m.)
- UNIT NO. 17: 2-bed Duplex (4 person), AREA: 86.3 SQ.M, 929 SQ.FT. (with access staircase and ground floor entrance = 93.56 sq.m.)
- UNIT NO. 18: 2-bed Duplex (4 person), AREA: 86.3 SQ.M, 929 SQ.FT. (with access staircase and ground floor entrance = 93.56 sq.m.)
- UNIT NO. 19: 2-bed Duplex (4 person), AREA: 86.3 SQ.M, 929 SQ.FT. (with access staircase and ground floor entrance = 93.56 sq.m.)
- UNIT NO. 20: 2-bed Duplex (4 person), AREA: 86.3 SQ.M, 929 SQ.FT. (with access staircase and ground floor entrance = 93.56 sq.m.)
- UNIT NO. 21: 2-bed Duplex (4 person), AREA: 86.3 SQ.M, 929 SQ.FT. (with access staircase and ground floor entrance = 93.56 sq.m.)
- UNIT NO. 22: 2-bed Duplex (4 person), AREA: 86.3 SQ.M, 929 SQ.FT. (with access staircase and ground floor entrance = 93.56 sq.m.)
- UNIT NO. 23: 2-bed Duplex (4 person), AREA: 86.3 SQ.M, 929 SQ.FT. (with access staircase and ground floor entrance = 93.56 sq.m.)



**FIRST FLOOR PLAN - Duplex-Apartment BLOCK 05**  
 scale 1:100 @ A1



**GROUND FLOOR PLAN - Duplex-Apartment BLOCK 05**  
 scale 1:100 @ A1

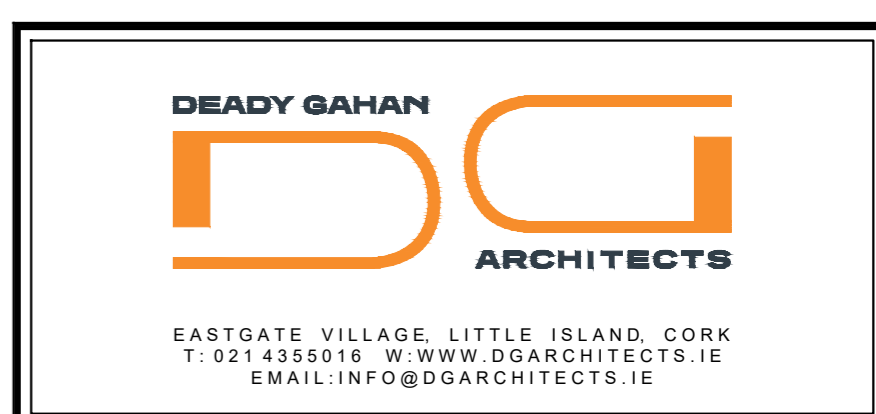


**SECTION A-A**  
 scale 1:200 @ A1



**Duplex Block 05 - Character Area 1**  
 See site plan (dwg no. 20068/P/003) for material locations

date	rev	name	chk	note
18.06.21	P1	SF	EJG	ISSUE FOR PLANNING



Project  
 PROPOSED MIXED-USE DEVELOPMENT  
 IN CLOGHROE, TOWER, CO. CORK

Drawing title			
PROPOSED DUPLEXES - BLOCK 05			
PLANS, ELEVATIONS & SECTION A-A			
Scale	Drawn	Checked	Date
1:100/200 @ A1	SF	EJG	22.11.20
Project No.	Dwg. No.	Revision	
20068	20068/P/708	P1	
<input type="checkbox"/> Information / Comments	<input type="checkbox"/> Tender		
<input type="checkbox"/> Planning	<input type="checkbox"/> Construction		